

Flange output shaft with dowel hole (ISO 9409-1)

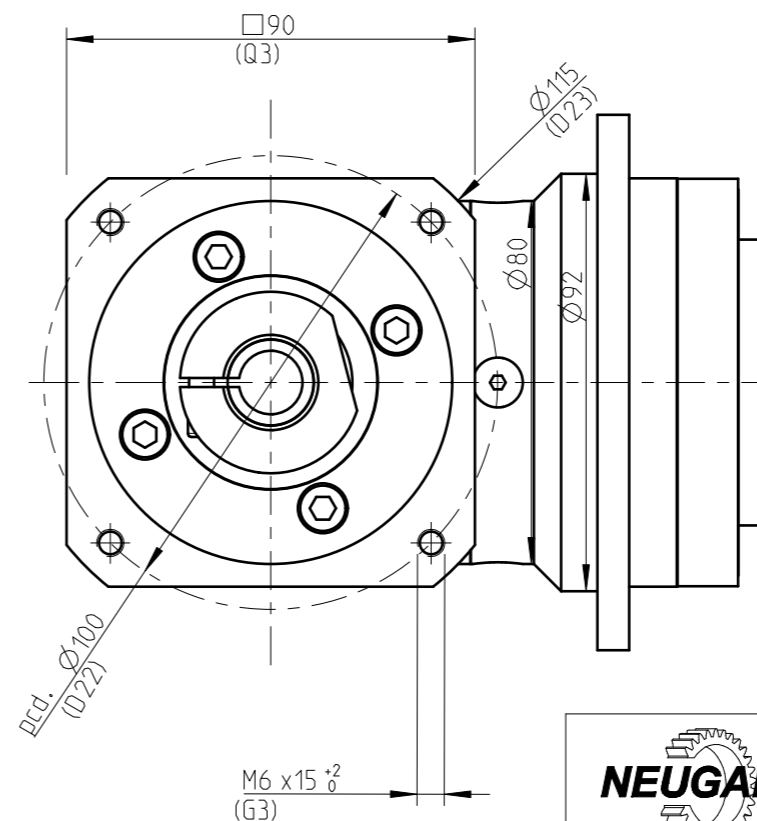
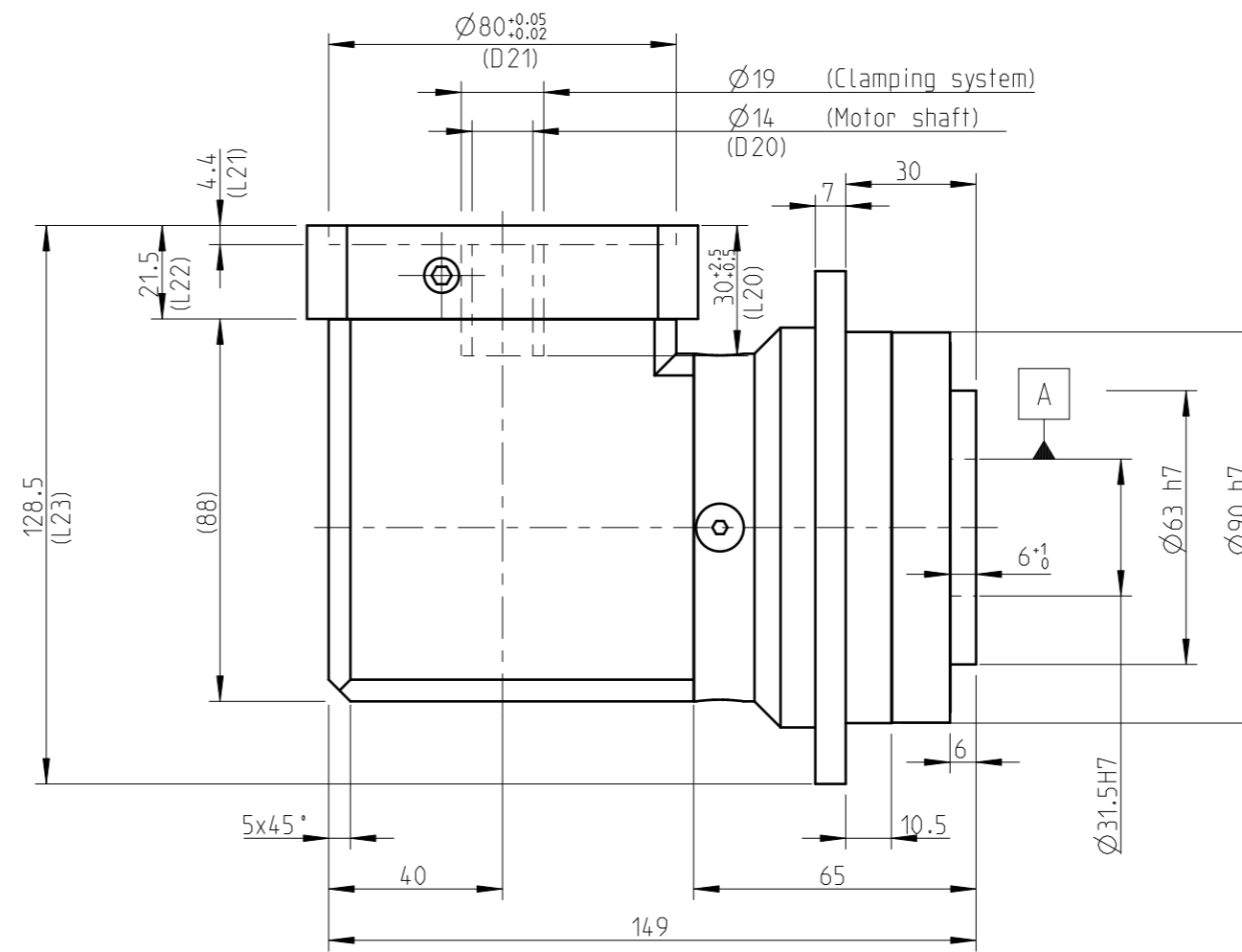
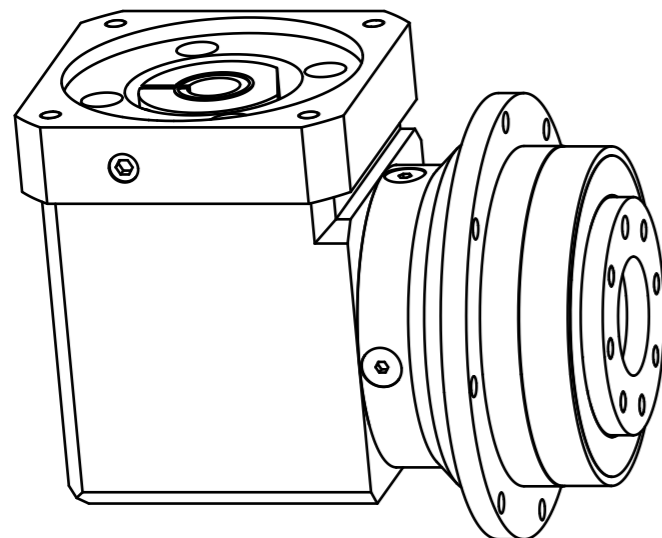
Materials / Surfaces:


Input flange: Aluminum / untreated
 Angle housing: Aluminum / untreated
 Housing: Steel / heat-treated and post-oxidized (black)
 Output flange: Steel / untreated

Hints:

Please pay attention to the operating and mounting instructions.
 Subject to modifications.

Variables on the drawing are dependent upon the motor.
 The given dimensions are exemplary.



	Scale: 3:5	DIN A3	ISO
	Revision status: F from: 01/2023		
General tolerance DIN ISO 2768-cL		W PLFE090-aii-SSSE3AE-Y(D20) /(L20)/(D21)/(D22)/B5/(G3)	
Neugart GmbH Keltenstr. 16 D-77971 Kippenheim			Sheet 1/2

General gearbox data	Character	Unit	
Bevel gearbox - gearing type	-	-	Straight teeth
Rotation direction	-	-	Input and output in the same direction
Number of stages	p	-	1-stage
Output shaft bearing	-	-	Deep groove ball bearing
Service life (L10h)	t _L	h	20.000
Max. operating temperature	T _{min} / T _{max}	°C	-25 / +90
Protection class	-	-	IP 54
Right angle gearbox lubrication (lubricated for life)	-	-	Standard lubrication (KLüberplex BEM 34-132)
Planetary gearbox lubrication (lubricated for life)	-	-	Standard lubrication (KLübersynth GE 14-112)
Installation position	-	-	Any
Max. bending moment based on the gearbox input flange (for motor weight) (1)	M _b	Nm	10,5
Motor shaft concentricity / Coaxiality and axial runout Motor flange	-	mm	0,04 / 0,08 (Measuring methods according to DIN EN 50347)
Required motor shaft tolerance	-	-	j6; k6
Min. permissible motor shaft length	L _{20 min}	mm	19
Reference operating mode	-	-	S1
Reference operating factor	K _A	-	1
Reference speed	n ₂	rpm	100
Reference ambient temperature	T _{Amb}	°C	20
Radial force for output bearing based on shaft end after L10h=20,000h with Fa=0N	F _{r 20.000h}	N	1400
Axial force for output bearing based on gearbox axis after L10h=20,000h with Fr=0N	F _{a 20.000h}	N	3000
Radial force for output bearing based on shaft end after L10h=30,000h with Fa=0N	F _{r 30.000h}	N	1200
Axial force for output bearing based on gearbox axis after L10h=30,000h with Fr=0N	F _{a 30.000h}	N	3000
Maximum radial force based on shaft end and T2=0Nm	F _{r Max}	N	2200
Maximum axial force based on gearbox axis and T2=0Nm	F _{a Max}	N	3300

$$(1) \text{ Max. motor weight* in kg} = \frac{0,2 \times M_b}{\text{motor length in m}}$$

- * with symmetrically distributed motor weight
- * with horizontal and stationary mounting

Ratio-dependent gearbox data	Character	Unit							
Ratio	aii	-	3	4	5	7	8	10	
Nominal output torque	T _{2N}	Nm	40 ⁽⁵⁾	53 ⁽⁵⁾	67 ⁽⁵⁾	65	50	38	
Max. output torque for 30.000 output shaft rotations	T _{2max}	Nm	64	85	107	104	80	61	
Emergency stop torque permitted 1000 times	T _{2Stop}	Nm	180	240	220	178	190	170	
Average idle torque for n1=3.000 rpm and 20 °C gearbox temperature	T ₀	Nm	0,95	0,7	0,6	0,45	0,4	0,35	
Average thermal input speed at 50% T2N, S1, and T_Amb Operating temperature may not be exceeded!	n _{1N 50%}	rpm	2800	3000	3200	4000	4000	4000	
Average thermal input speed at 100% T2N, S1, and T_Amb Operating temperature may not be exceeded!	n _{1N 100%}	rpm	2200	2300	2400	3300	3500	4000	
Max. mechanical input speed Operating temperature may not be exceeded!	n _{1 Limit}	rpm	7000	7000	7000	7000	7000	7000	
Torsional backlash based on output shaft	j _t	arcmin	< 13	< 13	< 13	< 13	< 13	< 13	
Torsional stiffness based on output shaft	c _g	Nm/arcmin	5,8	10,7	14,3	16,4	16,7	17,5	
Efficiency at T2N, gearbox temperature 70 °C and n1=1.000rpm	η	%	94	94	94	94	93	92	
Running noise at n1=3.000 rpm without load at a distance of 1m	Q _g	dB(A)	73	73	73	73	73	73	
Gearbox weight	m _G	kg	4,5	4,5	4,6	4,5	4,5	4,6	
Mass moment of inertia based on clamping system diameter input	J	kgcm ²	1,735	1,266	1,112	0,977	0,946	0,909	

(5) Different lifetime: 10,000h at T2N

Subject to modifications.



WPLFE090-aii-SSSE3AE-Y(D20)
/(L20)/(D21)/(D22)/B5/(G3)

Sheet 2/2

Revision status: F from: 01/2023