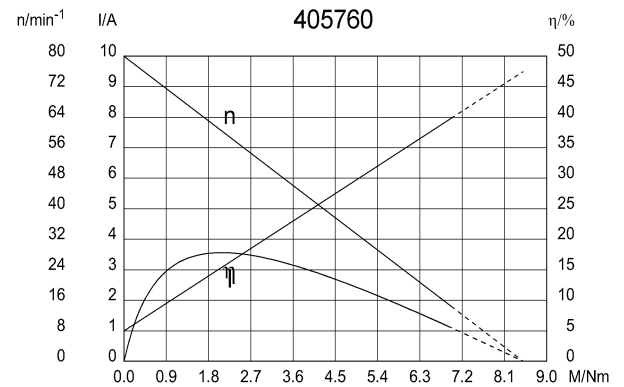
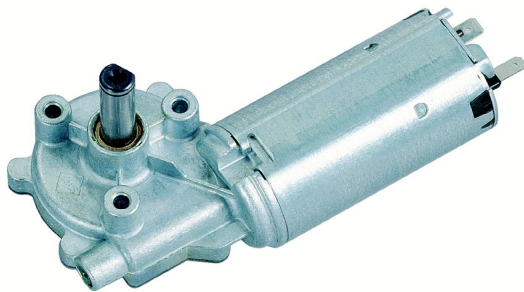
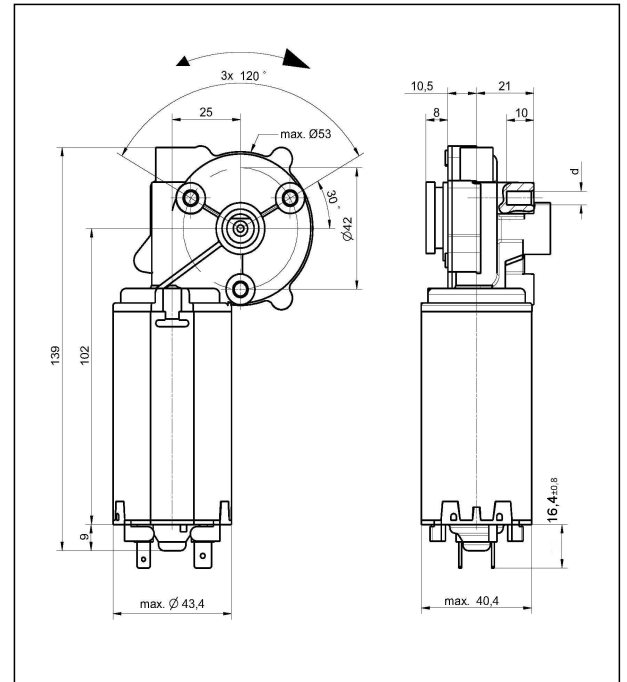
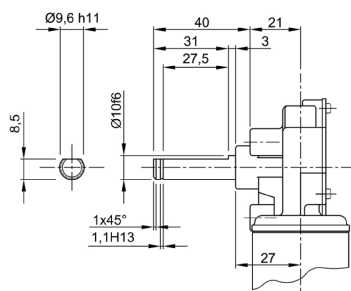


Technical Data

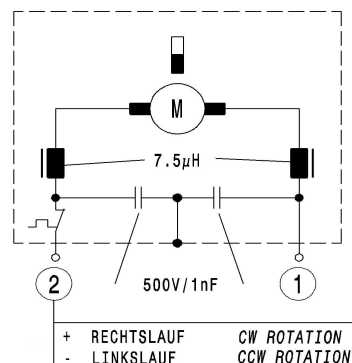
Rated voltage	U_N	[Volt]	24
No-load speed	n_0	[min ⁻¹]	80
Nominal torque	M_N	[Nm]	1,00
ON time	%		10
ON	[min]		
Starting torque	M_A	[Nm]	8,50
Gear ratio			62:1
Armature resistance, 2 bars	R	mOhm	2700
4 bars	R	mOhm	2400
Gear wheel material		Plastic	
Hall IC			X
Pulses/rev. drive shaft			186
Output channels			2
Remarks	d = for self-tapping screw M5 DIN 7500		
Enclosure class			IP30
Weight	[kg]		0,710



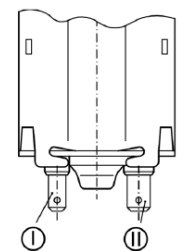
Shaft W147



Wiring diagram S405760

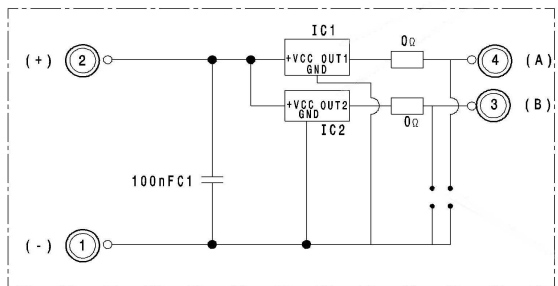


Connector layout K117



- I Blade terminal ends
4,8 x 0,8 DIN 46 244
- II Blade terminal ends
6,3 x 0,8 DIN 46 244

Hall Sensor S405760_HL



Connector layout K405760

