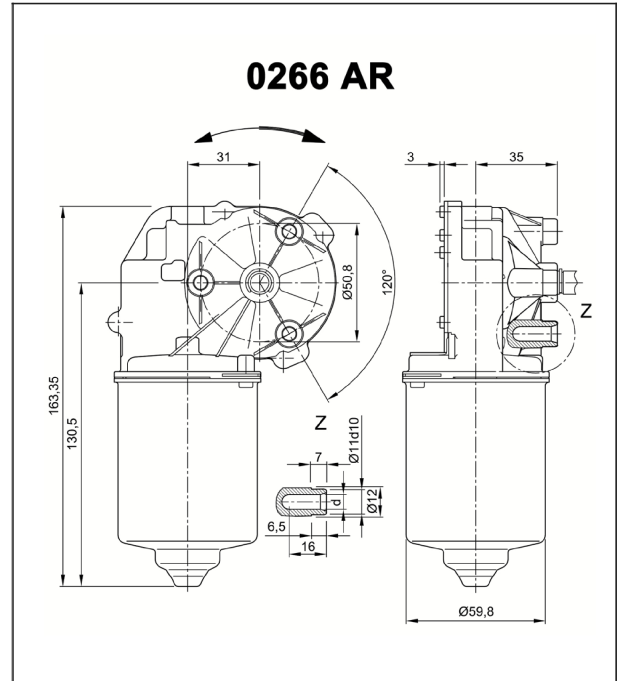


Performance data			
Nominal voltage	U_N	[Volt]	24
No-load speed	n_0	[min ⁻¹]	195
Nominal torque	M_N	[Nm]	3,00
Starting torque	M_A	[Nm]	21,00
Gear ratio			53:2
Gear wheel material		Plastic	
Hall IC			
Pulses			79.5
Output channels			2
Remarks d=for thread forming screws M6 DIN-ISO 965-2			
Enclosure class			IP30
Weight		[kg]	1.210



405666

Torque [M/Nm]	Speed [n/min ⁻¹]	Efficiency [%]	Current [I/A]
0	195	0	3
3	180	10	6
6	160	25	12
9	140	35	18
12	120	40	21
15	100	42	24
18	80	43	27
21	60	44	30
24	40	44	33
27	20	44	36
30	0	44	39

Output shaft drawing W328

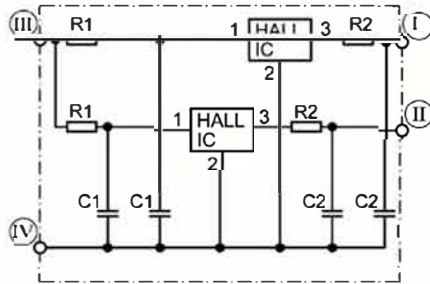
Wiring diagrams S30

Connector layout K320

Flat plug (DIN 46244) 6,3x0,8 mating with receptacle housing part#180907, drwg#

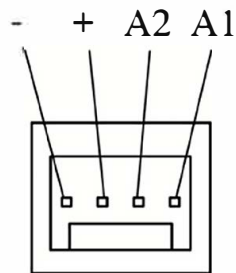
C-180907& Receptacles for tabs, conductor cross section 0,5-1,5 sqmm (20-18AWG) part# 92 - x, drwg# 925603 www.tycoelectronics.com

Hall sensor S141



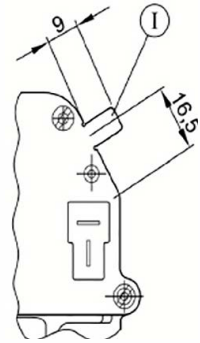
- I Hall-IC A1
- II Hall-IC A2
- III Hall-IC +
- IV Hall-IC -

Connector layout K325



MAS-CON Solder tail MLAS 100-3435 mating with end connector CE100F-22-xx-x-x or CEP100 F-22-xx-x-x
www.itwpancon.com

Connector layout K321



Ground connection 6.3 x 0.8 DIN 46 244, d=0.9-0.1mm, mating with receptacle for tab, conductor cross section 0.5-1.5 sqmm/20-16 AWG, part# RSB8240.158 F 6.3-1.5
www.stocko.de