

Design Data	
Commutation	Brushed
Direction of rotation	Bi-directional
Bearing type	A:Ball - B:Sleeve

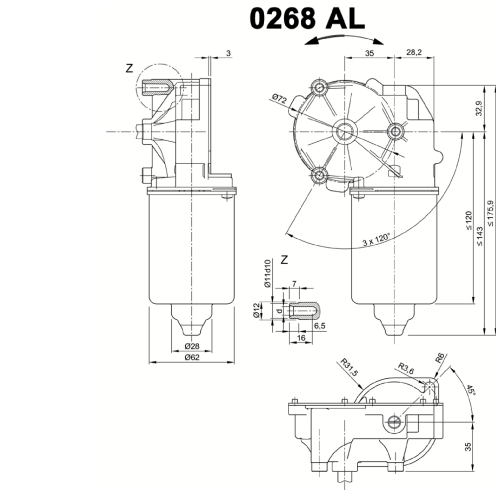
Performance data		
Rated voltage [V]	U_N	24
Nominal torque [Nm]	M_N	6.00
No-load speed [min^{-1}]	n_0	59.0
Nominal power [W]	P_N	39.2
Nominal current [A]	I_N	6.0
Nominal force [kN]	F_N	0.00
Duty cycle		s1

Sensor data	
Pulses	91
Output channels	1

Other data	
Gear ratio	91:1
Gear wheel material	plastic
Suppression components	6 μH
Enclosure class	IP 30
Weight [kg]	1.250

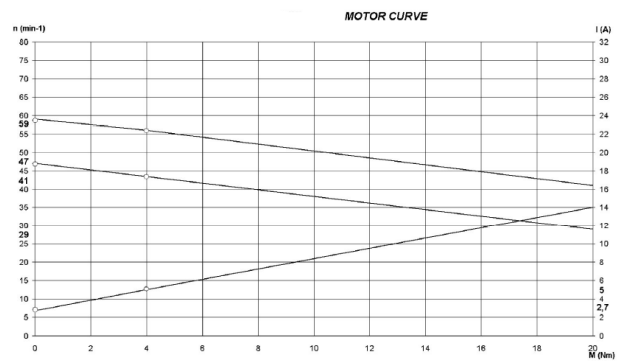
Remarks: d=for thread forming screws M6 DIN ISO 965-2

Characteristic curves

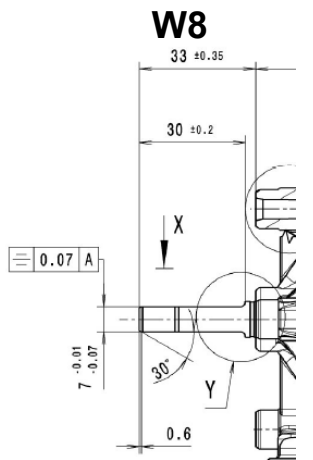


Motor picture

Illustration image

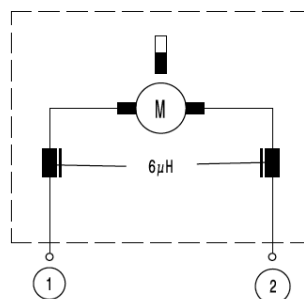


Output shaft drawing (W), Wiring diagrams (S) and Connector layout (K)

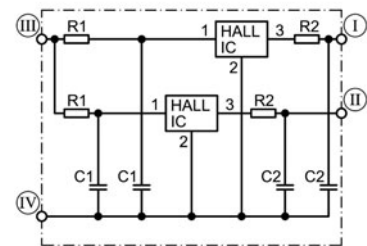


S162

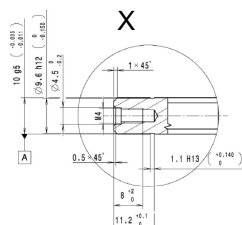
SCHALTBILD
CIRCUIT DIAGRAM



S 141



- I Hall-IC A1, terminal 3
- II Hall-IC A2, terminal 4
- III Hall-IC +, terminal 5
- IV Hall-IC -, terminal 6

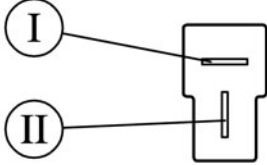


Series DCK35

Motor type 405 088

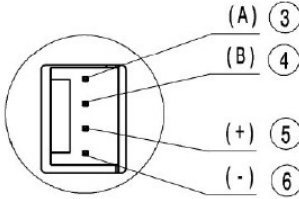
Output shaft drawing (W), Wiring diagrams (S) and Connector layout (K)

K 320



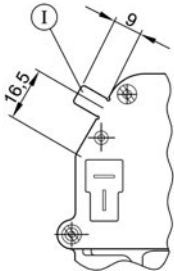
Flat plug (DIN 46244) 6,3x0,8 mating with receptacle housing part#180907, drwg# C-180907& Receptacles for tabs, conductor cross section 0,5-1,5 sqmm (20-18AWG) part# 925603-x, drwg# 925603 www.tycoelectronics.com

K 324



MAS-CON Solder tail MLAS 100-3435 mating with end connector CE100F-22-xx-x-x or CEP100 F-22-xx-x-x www.itwpancon.com

K 312



Ground connection 6.3 x 0.8 DIN 46 244, $d=0.9-0.1mm$, mating with receptacle for tab, conductor cross section 0.5-1.5 sqmm/20-16 AWG, part# RSB8240.158 F 6.3-1.5 www.stocko.de

Notes
