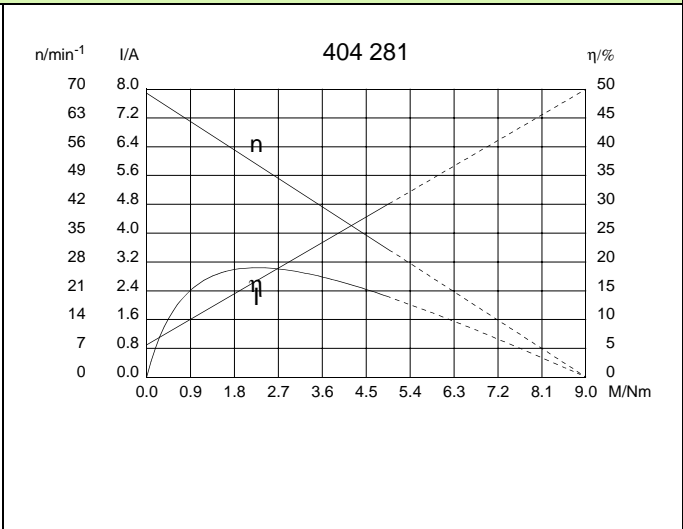
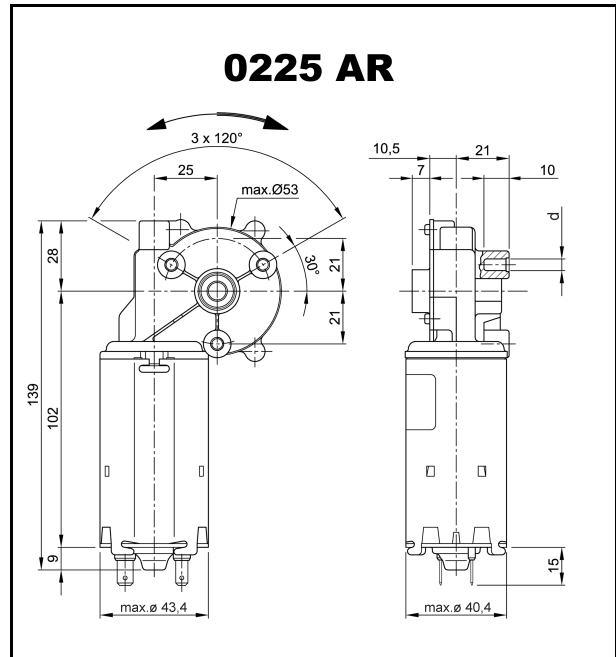


Technical Data

Rated voltage	U_N	[Volt]	24
No-load speed	n_0	[min ⁻¹]	69
Nominal torque	M_N	[Nm]	1,0
ON time	%		10
ON	[min]		
Starting torque	M_A	[Nm]	9,0
Gear ratio	i		62/1
Armature resistance, 2 bars	R	[mΩ]	3000,0
4 bars	R	[mΩ]	2600,0
Armature inductance, 2 bars	L	[mH]	2,90
4 bars	L	[mH]	2,40
Armature load inertia	J_R	[kgm ²] × 10 ⁻⁶	9,0
Gear wheel material			plastic
Hall IC			
Pulses/rev. drive shaft			
Output channels			
Remarks	d = for thread-forming screw M5 DIN 7500		
Enclosure class			IP 30
Weight		[kg]	0,71



W 148

I Tapered splines 7 x 8 DIN 5481 continuous

S 30

K 117

I Blade terminal ends
4,8 x 0,8 DIN 46 244
II Blade terminal ends
6,3 x 0,8 DIN 46 244